

Tidal charge and its extensions in black hole astrophysics

Prokopov V.A.

Spherically-symmetric metric:

$$ds^2 = \Delta(r)dt^2 - \frac{dr^2}{\Delta(r)} - r^2(d\theta^2 + \sin^2 \theta d\phi^2).$$

Spherically-symmetric metric:

$$ds^2 = \Delta(r)dt^2 - \frac{dr^2}{\Delta(r)} - r^2(d\theta^2 + \sin^2 \theta d\phi^2).$$

Schwarzschild metric:

$$\Delta(r) = 1 - \frac{2M}{r}$$

where M is the black hole mass, $G=c=\hbar=1$.

Spherically-symmetric metric:

$$ds^2 = \Delta(r)dt^2 - \frac{dr^2}{\Delta(r)} - r^2(d\theta^2 + \sin^2 \theta d\phi^2).$$

Reissner-Nordstrom metric :

$$\Delta(r) = 1 - \frac{2M}{r} + \frac{Q^2}{r^2}$$

where M is the black hole mass, Q is the electric or tidal charge.

Spherically-symmetric metric:

$$ds^2 = \Delta(r)dt^2 - \frac{dr^2}{\Delta(r)} - r^2(d\theta^2 + \sin^2 \theta d\phi^2).$$

Metric under consideration:

$$\Delta(r) = 1 - \frac{2M}{r} + \frac{Q^2}{r^2} + \frac{A}{r^3}.$$

where M is the black hole mass, Q is the charge, A is the third correction.

Spherically-symmetric metric:

$$ds^2 = \Delta(r)dt^2 - \frac{dr^2}{\Delta(r)} - r^2(d\theta^2 + \sin^2 \theta d\phi^2).$$

Metric under consideration after normalization:

$$\Delta(\hat{r}) = 1 - \frac{2}{\hat{r}} + \frac{q}{\hat{r}^2} + \frac{\alpha}{\hat{r}^3}$$

where $\hat{r}=r/M$, $q=Q^2/M^2$, $\alpha=A/M^3$

Black hole horizon.

Black hole horizon.

The horizon position is defined by the equation $\Delta(r)=0$.

Black hole horizon.

The horizon position is defined by the equation $\Delta(r)=0$.

Our metric is a third order polynomial.

Black hole horizon.

The horizon position is defined by the equation $\Delta(r)=0$.

Our metric is a third order polynomial.

The equation can have up to three roots.

Black hole horizon.

The horizon position is defined by the equation $\Delta(r)=0$.

Our metric is a third order polynomial.

The equation can have up to three roots.

The curves of the changing between states with different numbers of horizons are determined by the system of equations:

$$\Delta(\hat{r}) = 0, \quad \frac{d\Delta(\hat{r})}{d\hat{r}} = 0.$$

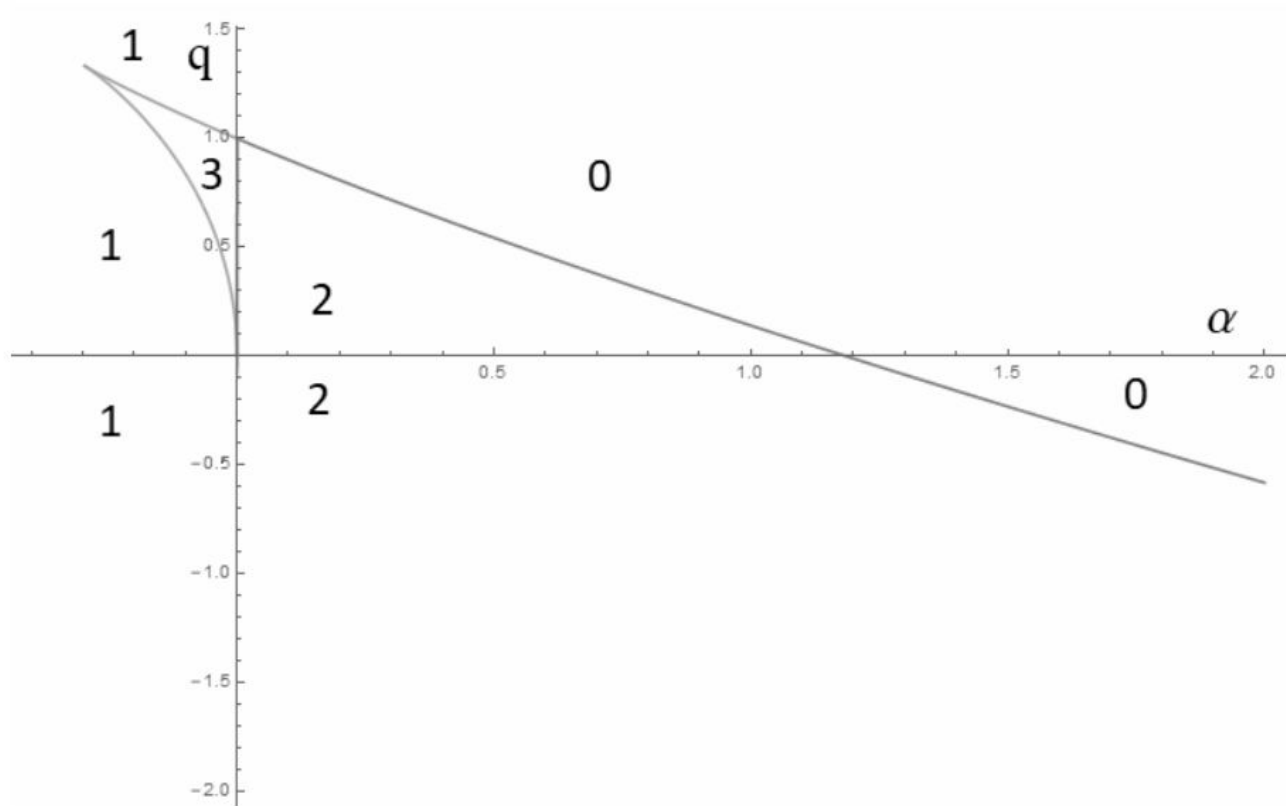


Fig. 1 Configuration space of the model with the third correction divided in areas with various number of horizons.

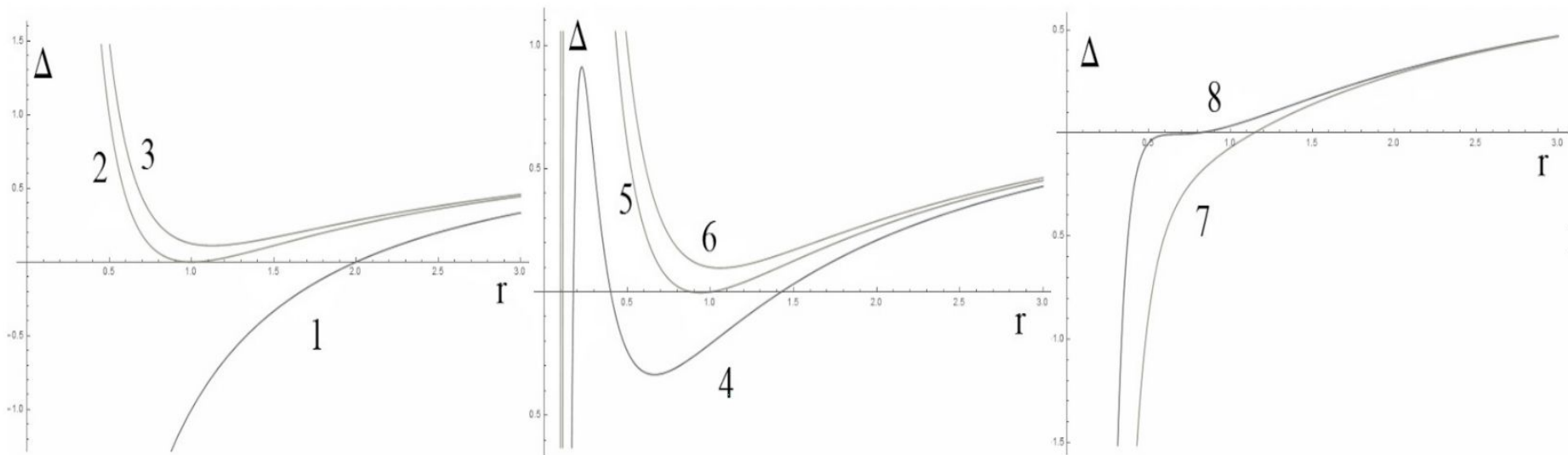


Fig. 2 Plots of the metric function Δ of the generalized Reissner-Nordström ansatz with different values of q and α . 1) $\alpha = 0$, $q = 0$; Schwarzschild BH 2) $\alpha = 0$, $q = 1$; Reissner-Nordström BH with critical charge. 3) $\alpha = 0$, $q = 9/8$; "naked singularity" in Reissner-Nordström ansatz. 4) $\alpha = -0.1$, $q = 0.89$; BH with three horizons. 5) $\alpha = -0.1$, $q = 1.1$; BH with two horizons. 6) $\alpha = -0.1$, $q = 1.2$; BH with one compact horizon. 7) $\alpha = -0.4$, $q = 1.33$; BH with one horizon. 8) $\alpha = -0.296$, $q = 1.33$: end of horizon disappearance curve.

Black hole shadow.

Black hole shadow.

Following Chandrasekar, photon geodesic equation reads:

$$\left(\frac{d\hat{r}}{d\tau}\right)^2 + \left(1 - \frac{2}{\hat{r}} + \frac{q}{\hat{r}^2} + \frac{\alpha}{\hat{r}^3}\right) \frac{L^2}{\hat{r}^2} = E^2,$$

$$\frac{d\phi}{d\tau} = \frac{L}{\hat{r}^2},$$

where E is the photon energy, L is the angular momentum of a photon beam, and τ is an affine parameter.

Black hole shadow.

We map photons motion by the angle ϕ , so the equation reads:

$$u(r) = \left(\frac{d\hat{r}}{d\phi} \right)^2 = \frac{\hat{r}^4}{D^2} - \hat{r}^2 \left(1 - \frac{2}{\hat{r}} + \frac{q}{\hat{r}^2} + \frac{\alpha}{\hat{r}^3} \right)$$

where $D=L/E$ is the photon impact parameter.

Black hole shadow.

We map photons motion by the angle ϕ , so the equation reads:

$$u(r) = \left(\frac{d\hat{r}}{d\phi} \right)^2 = \frac{\hat{r}^4}{D^2} - \hat{r}^2 \left(1 - \frac{2}{\hat{r}} + \frac{q}{\hat{r}^2} + \frac{\alpha}{\hat{r}^3} \right)$$

where $D=L/E$ is the photon impact parameter.

The impact parameter corresponding to the capture of a photon on the photon sphere is the size of the shadow.

Black hole shadow.

We map photons motion by the angle ϕ , so the equation reads:

$$u(r) = \left(\frac{d\hat{r}}{d\phi} \right)^2 = \frac{\hat{r}^4}{D^2} - \hat{r}^2 \left(1 - \frac{2}{\hat{r}} + \frac{q}{\hat{r}^2} + \frac{\alpha}{\hat{r}^3} \right)$$

where $D=L/E$ is the photon impact parameter.

The impact parameter corresponding to the capture of a photon on the photon sphere is the size of the shadow.

Such orbits are described by the following equations:

$$u(r) = 0, \quad \frac{du(r)}{dr} = 0.$$

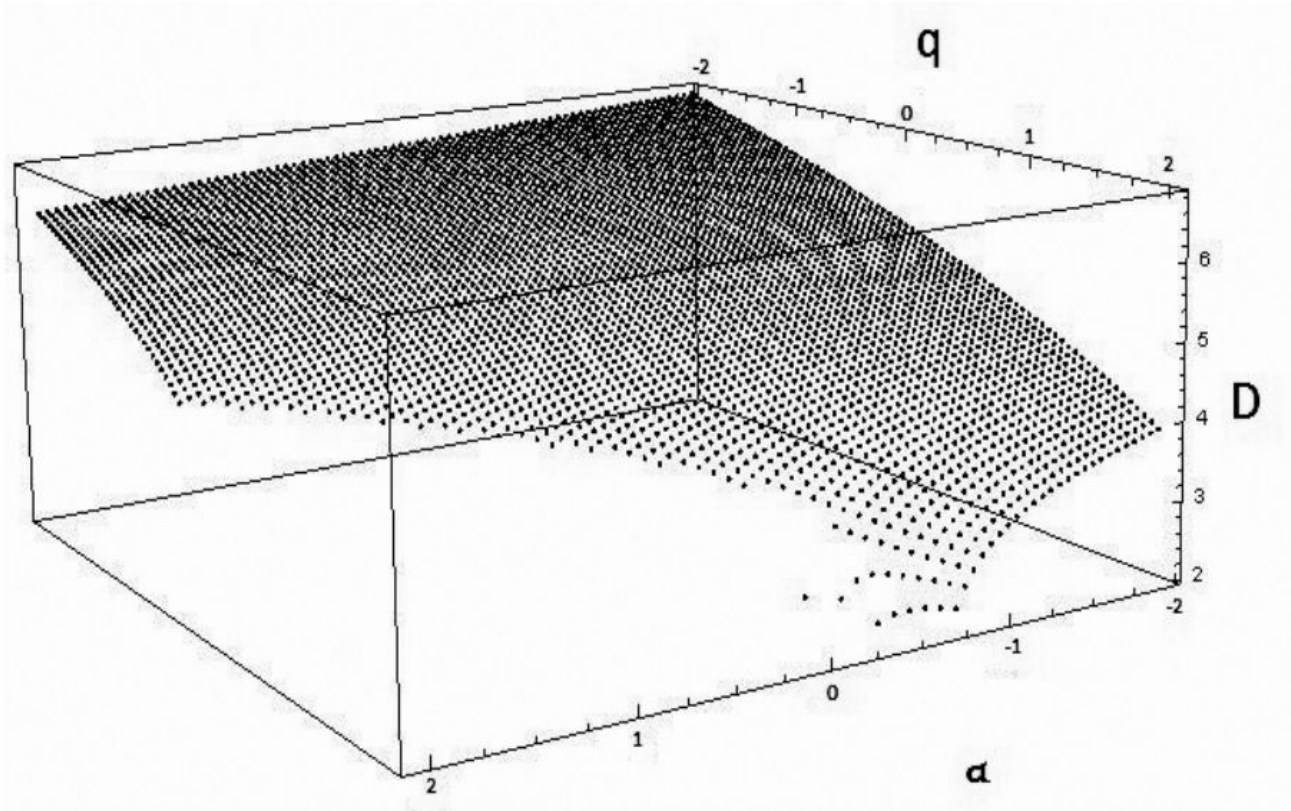


Fig. 3 The dependence of the critical impact parameter D on q and α

Black hole shadow.

We map photons motion by the angle ϕ , so the equation reads:

$$u(r) = \left(\frac{d\hat{r}}{d\phi} \right)^2 = \frac{\hat{r}^4}{D^2} - \hat{r}^2 \left(1 - \frac{2}{\hat{r}} + \frac{q}{\hat{r}^2} + \frac{\alpha}{\hat{r}^3} \right)$$

Critical configurations separating the configuration space into areas where the object either has or doesn't have a shadow correspond the following system:

$$u(r) = 0, \quad \frac{du(r)}{dr} = 0, \quad \frac{d^2u(r)}{dr^2} = 0.$$

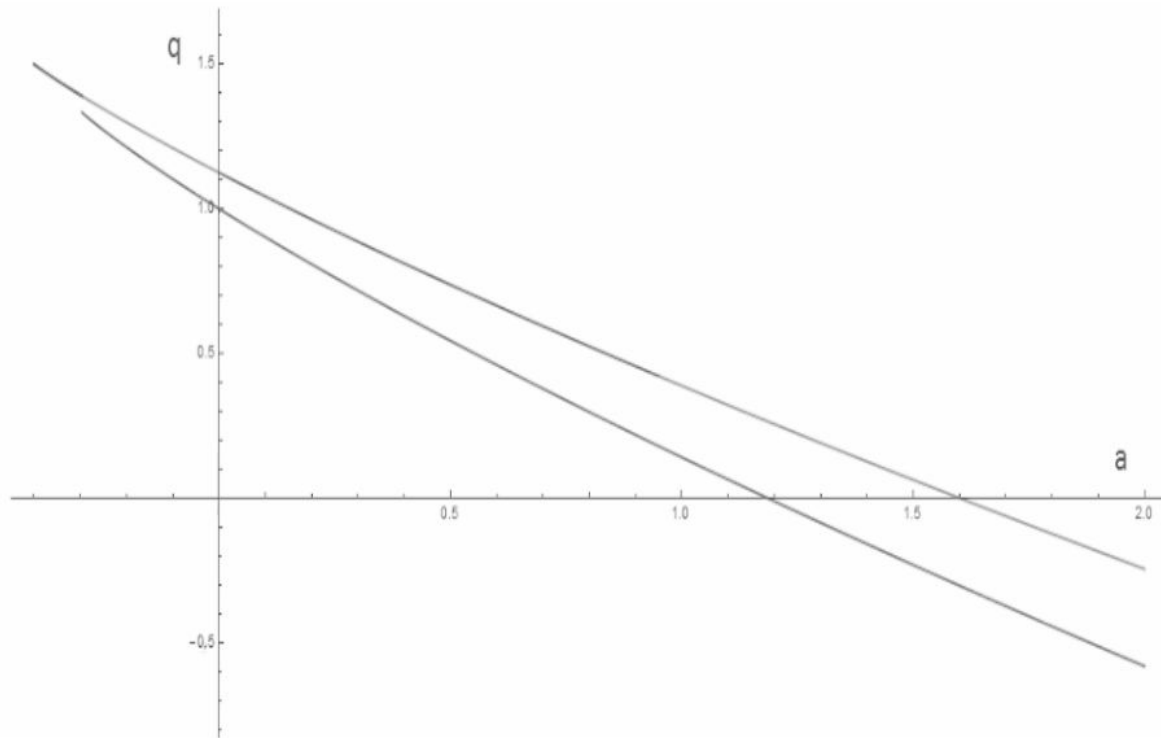


Fig. 4 Critical curves corresponding to finite shift of the horizon radius and to the finite shift of size of the shadow. The upper curve corresponds to the shadow size shift, while the lower one to the horizon radius shift.

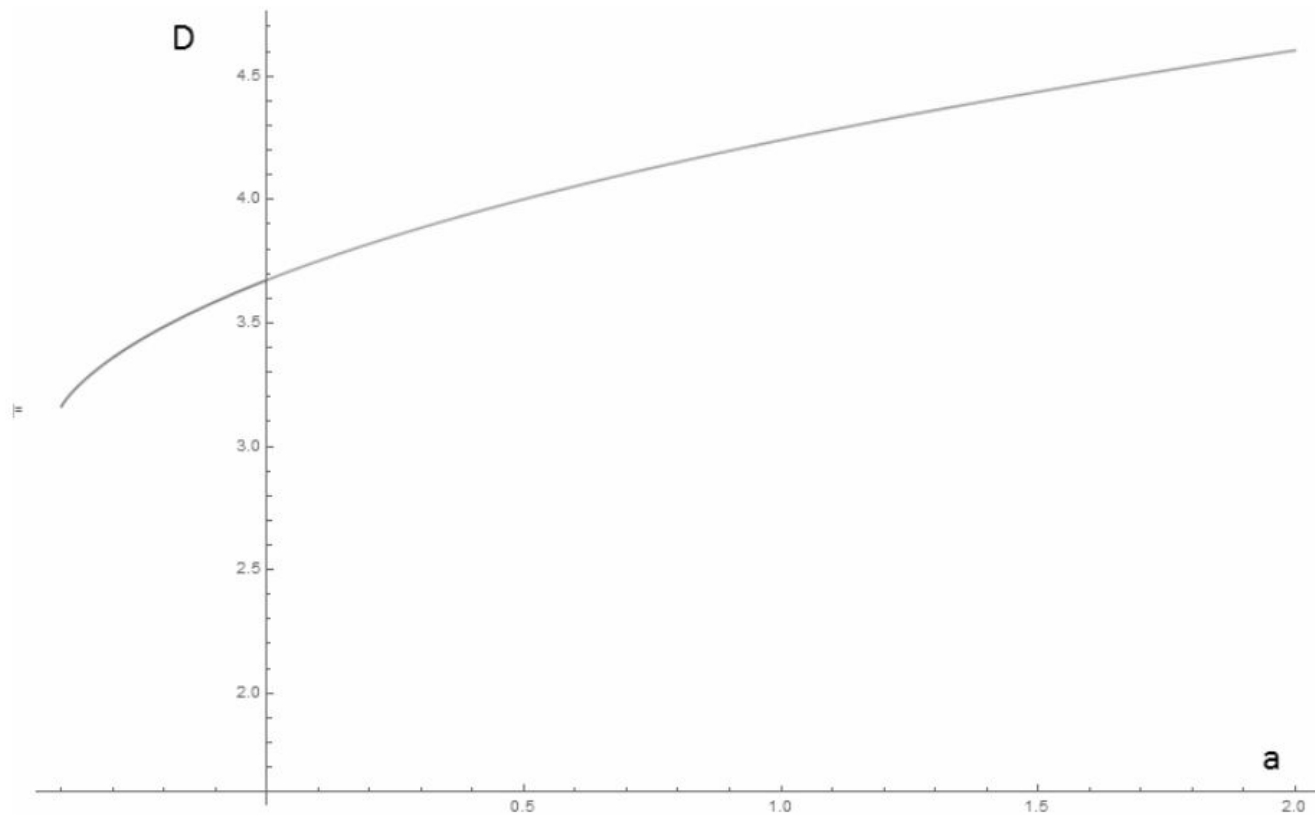


Fig. 5 The dependence of $D(\alpha)$ on $\alpha(q)$ for the case of the critical shadow size.

Gravitational lensing.

Gravitational lensing.

It is important to highlight that one-to-one correspondence between the shadow size and metric parameters is no longer takes place due to the fact that the metric has two independent parameters q and α .

Gravitational lensing.

It is important to highlight that one-to-one correspondence between the shadow size and metric parameters is no longer takes place due to the fact that the metric has two independent parameters q and α .

Gravitational lensing can provide an additional information on metric parameters, as BHs with the same size of a shadow have different external field and act as different gravitational lenses.

Gravitational lensing.

It is important to highlight that one-to-one correspondence between the shadow size and metric parameters is no longer takes place due to the fact that the metric has two independent parameters q and α .

Gravitational lensing can provide an additional information on metric parameters, as BHs with the same size of a shadow have different external field and act as different gravitational lenses.

We obtained the dependence between the deflection angle, BH parameters (q, α) and the position of a star on the image plane numerically.

Gravitational lensing.

It is important to highlight that one-to-one correspondence between the shadow size and metric parameters is no longer takes place due to the fact that the metric has two independent parameters q and α .

Gravitational lensing can provide an additional information on metric parameters, as BHs with the same size of a shadow have different external field and act as different gravitational lenses.

We obtained the dependence between the deflection angle, BH parameters (q, α) and the position of a star on the image plane numerically.

As a result two BHs with equal shadow sizes have different value of the parameter α . Therefore one can parameterize configurations with any given shadow size by α .

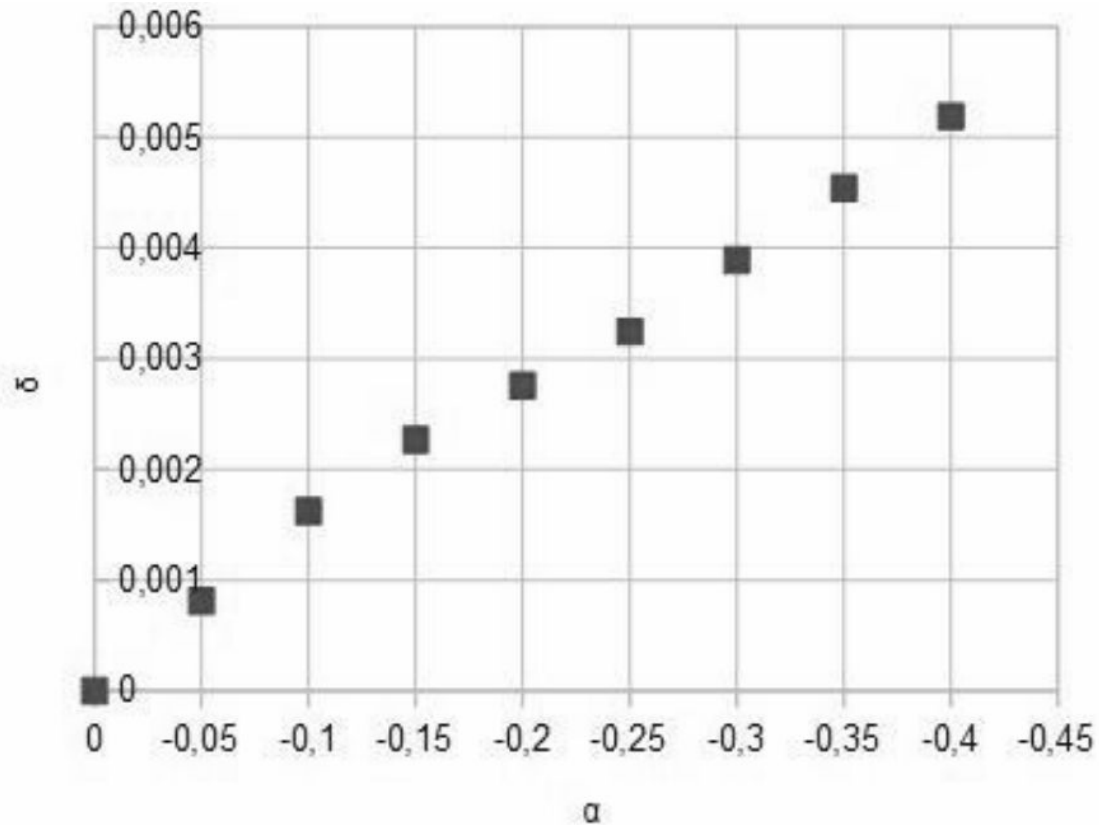


Fig. 6 Deviation parameter $\delta = |D(\alpha) - D(0)|/D(0)$ for the BH with same shadow size corresponding to $D_{sh} = 3\sqrt{3}$.

The last stable orbit.

The last stable orbit.

Following Chandrasekar, equation of motion of a test particle with unit mass reads:

$$\left(\frac{d\hat{r}}{d\tau}\right)^2 + U = E^2,$$

$$\frac{d\phi}{d\tau} = \frac{L}{\hat{r}^2}$$

$$U = \left(1 - \frac{2}{\hat{r}} + \frac{q}{\hat{r}^2} + \frac{\alpha}{\hat{r}^3}\right) \left(1 + \frac{L^2}{\hat{r}^2}\right).$$

where E is the energy of a particle, L is its angular momentum, and U is the potential energy.

The last stable orbit.

For circular orbit $\frac{d\hat{r}}{d\tau} = 0$,

The last stable orbit.

For circular orbit $\frac{d\hat{r}}{d\tau} = 0$,

Then $U=E^2$

The last stable orbit.

For circular orbit $\frac{d\hat{r}}{d\tau} = 0$,

Then $U=E^2$

The last stable orbit is situated at the inflection point of the potential energy, so it can be found from the equation:

$$\frac{dU}{dr} = 0, \quad \frac{d^2U}{dr^2} = 0.$$

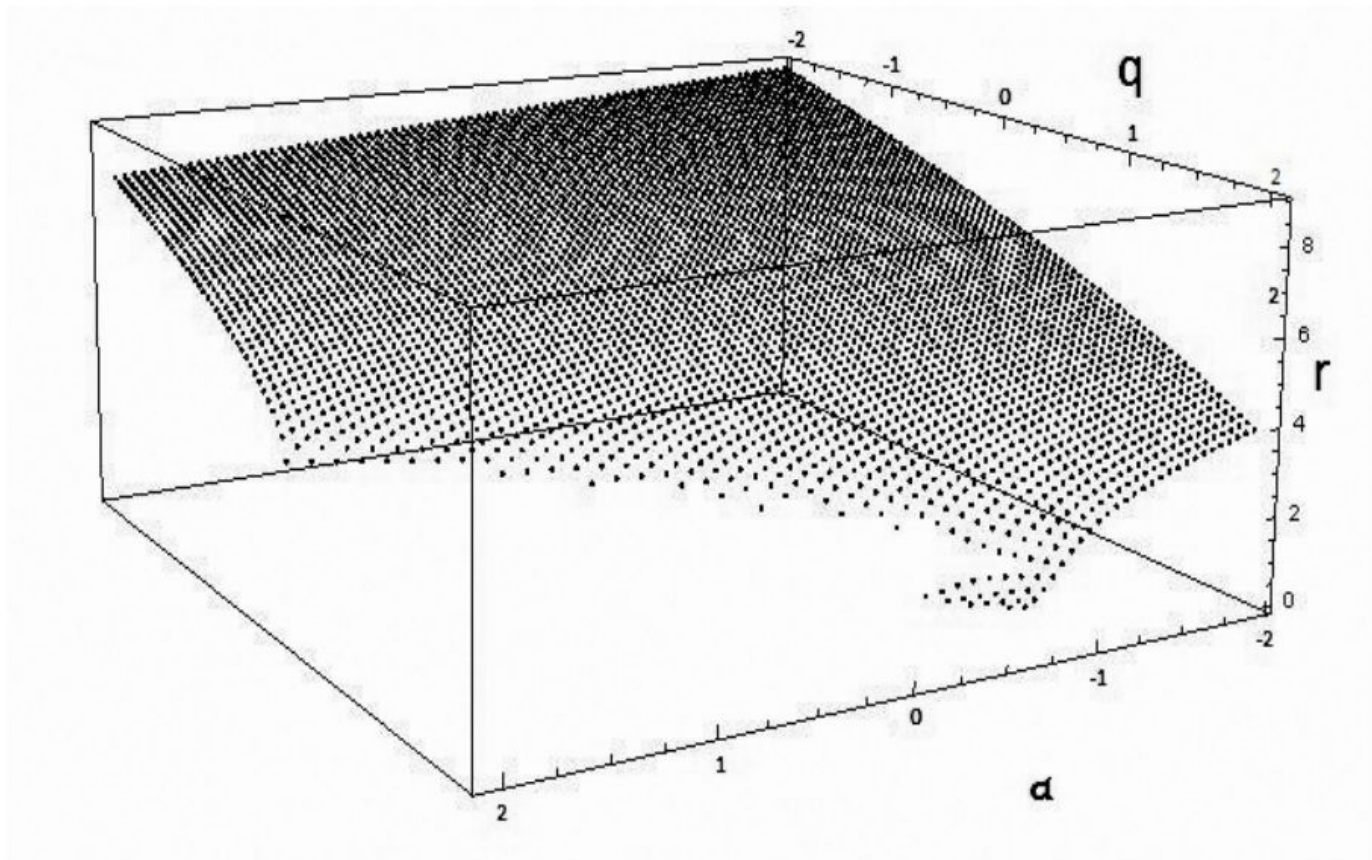


Fig. 7 The size of the last stable orbit $r(q, \alpha)$

The last stable orbit.

For circular orbit $\frac{d\hat{r}}{d\tau} = 0$,

Then $U=E^2$

The last stable orbit is situated at the inflection point of the potential energy, so it can be found from the equation:

$$\frac{dU}{dr} = 0, \quad \frac{d^2U}{dr^2} = 0.$$

The metric admits exotic solutions with zero orbital momentum:

$$\frac{dU}{dr} = 0, \quad L = 0.$$

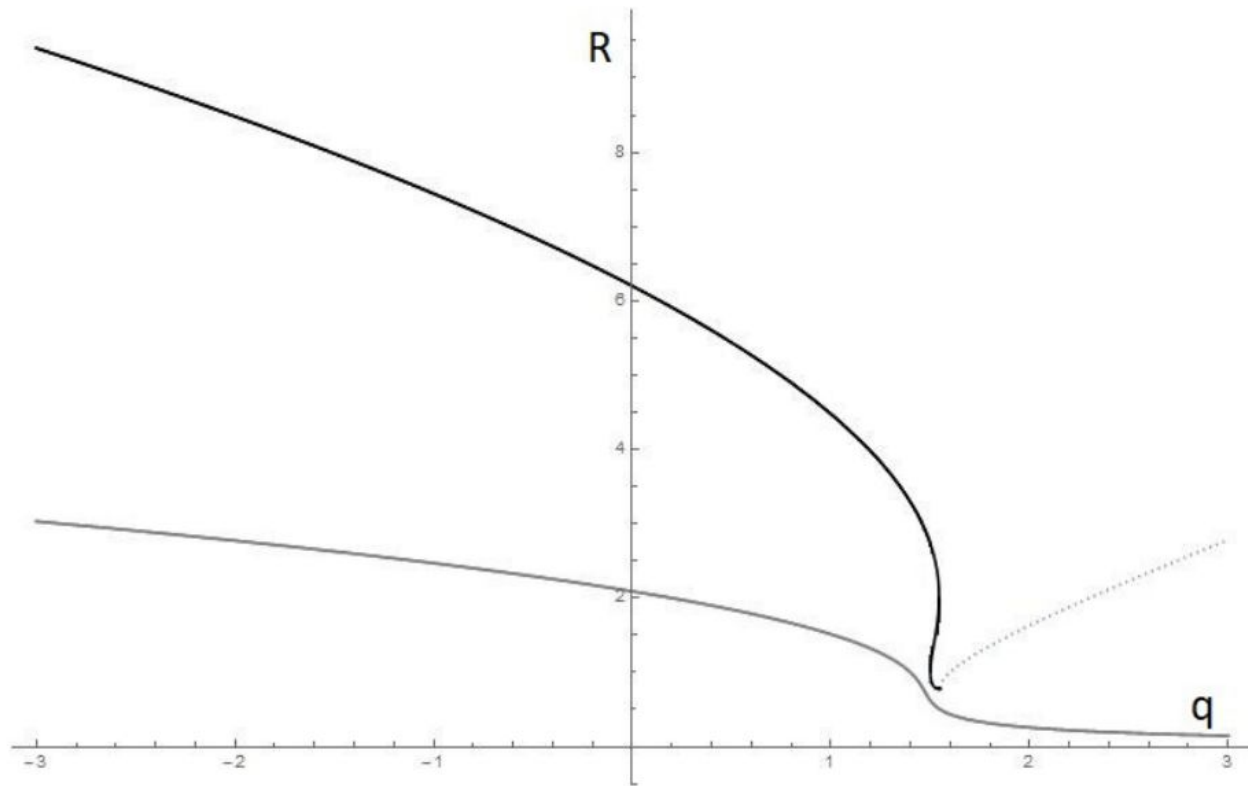


Fig. 8 The size of the last stable orbit (upper curve) for $\alpha = -0.4$. The lower curve corresponds to the size of the horizon. Dashed one shows to the orbits with zero moment.

Conclusions

Conclusions

Black hole configurations described by our metric can have arbitrary small shadow ($D < 4$) and last stable orbit radius ($r < 4$). The similar effect doesn't take place in Reissner-Nordstrom case, as it has configuration space of a smaller number of dimensions.

Conclusions

Black hole configurations described by our metric can have arbitrary small shadow ($D < 4$) and last stable orbit radius ($r < 4$). The similar effect doesn't take place in Reissner-Nordstrom case, as it has configuration space of a smaller number of dimensions.

Our metric can describe more compact black holes ($r < 0.4$), black holes without normal shadow and black holes with the last stable orbit with zero moment.

Conclusions

Black hole configurations described by our metric can have arbitrary small shadow ($D < 4$) and last stable orbit radius ($r < 4$). The similar effect doesn't take place in Reissner-Nordstrom case, as it has configuration space of a smaller number of dimensions.

Our metric can describe more compact black holes ($r < 0.4$), black holes without normal shadow and black holes with the last stable orbit with zero moment.

Our metric can describe a finite shift of the horizon, shadow size and last stable orbit radius with infinitely small variation of metric parameters q and α .